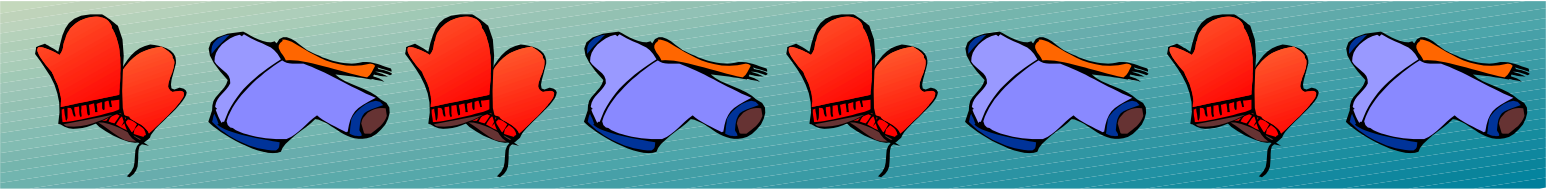


The **3** C's

WOMEN'S DIVISION
COMMITTED TO SUPPORTING OUR
COMMUNITY
HARITIES
CITIZENS
OF OSHKOSH AREA, INC.

The **3** C's

January
2012



Warm up at the January Quarterly meeting!

January 24

Primo's (on Jackson)

Social: 5:30 p.m. Dinner: 6:30 p.m.

Family style menu will include:

Tenderloin tips/Broiled haddock

Garlic mashed potatoes and Wild rice

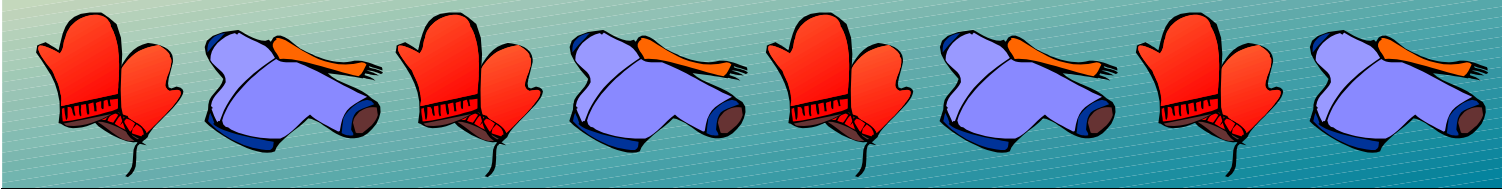
Vegetable, House salad, and Bread

Carrot Cake and Coffee

Cost: \$15.50

RSVP by January 20

Entertainment for the evening will be an informative talk about identity theft.



January Quarterly Meeting—January 24

Family style meal

Name _____

_____ will attend @ \$15.50 each _____ amount enclosed

Please confirm your reservation and include your check by ***January 20***

Mail to:
Karen Rees
1709 Algoma
Oshkosh, WI 54902

Board of Directors

President:

Joyce Pollnow

688-2661

Term: 12/31/2012

Vice President:

TBA

Secretary:

Carol Krueger

744-5744

Term: 12/31/2012

Treasurer:

TBA

Board

Members:

Michelle Hammett

426-1499

Term: 12/31/2014

Katie Koirala

233-2471

Term: 12/31/2014

Lynne

Messerschmidt

252-2317

Term: 12/31/2014

Gert Schultz

235-5068

Term: 12/31/2012

Denise Griedl

426-4912

Term: 12/31/14

Sue Geffers

233-5713

Term: 12/31/14

Mary Westphal

231-5486

Term: 12/31/14

Sweet Sensations News:

February 12, 2012

New Location! LaSure's Hall

11 a.m.-3 p.m.

There will be an open bar



Raffle Items:

14 K white gold dark pearl ring from A & E Jewelers

\$100 cash from West Pointe Bank

\$100 Visa gift card from Winnebago Community Credit Union

3 month membership to Anytime Fitness

Any items to donate to silent auction will be greatly appreciated!

Please bring to January Quarterly meeting or call:

Mary Berger at 233-1411 or Cindy Knaggs at 235-5180.

More information will be in the February newsletter.

Scholarships

The Women's Division Scholarship Committee is pleased to announce that the Board of Directors has approved an increase to our High School Graduate Scholarship from \$1000 to \$1500 this year. Applications for the 2012-2013 Scholarship are now available from each of the Oshkosh High School's counselor or online at www.missoshkosh.com/womens_division under "It's Time Again" OR www.oshkoshshareacf.org/scholarships, click on "search scholarships", then view all scholarships. The One Year Scholarship is open to all Oshkosh School district high school seniors or any high school senior who's home address is Oshkosh and is continuing their education in a 1 or 2 year associates, or 4 year plus accredited program. The Women's Division Graduate Scholarship Committee will be looking for students with a minimum cumulative G.P.A. of 2.5 (generally we seek the student with a lower G.P.A. who may not be considered by other scholarships based on high G.P.A.) AND great financial need. Deadline to apply is March 5, 2012. The Scholarship will be acknowledged at the receiving student's high school May Awards Ceremony. Any questions please contact Nancy Crha at 233-4016 or Jay Roeming at 233-5712.

Name Badges

Anyone wishing to order a name badge, please contact Mary Berger at 233-1411. We have special pricing at \$6.50 each if we order at least three at a time. They are nice badges with the magnetic backing. It is professional looking and shows we mean business when we are working one of our fundraisers and are wearing our name badge.

Committee Chairpersons:

Adopt a Family: Gloria Miller 235-1914

Mary Berger 233-1411

*Collects cash donations and distributes Christmas gifts to a families in need. Program through Salvation Army

Audit: Karen Rees 235-2844 & Pat Saft 231-6128

*Performs an annual audit of all accounts

Brat Fry: Gloria Miller, 235-1914

Co-chair position open

*Organizes and schedules brat fry's with Pick 'n Save and members

Budget: Joyce Pollnow 688-2661

*Prepares annual year end budget report

Bulletin: Linda Verwiel 231-4213 or

jlverwiel@yahoo.com

*Prepares newsletter to membership

Charities Awards: Denise Griedl 426-4912 or 232-2260

Constitution: Carol Reigh 203-2494

*Gathers all changes in Constitution, Policies or Procedures and prepares an annual update to be presented to the membership at the annual meeting

Historian: Carol Krueger 582-8634

Membership: Cindy Knaggs 235-5180

Co-Chairman: Cathy Steinert 426-2167

*Maintains membership

Miss Oshkosh Pageant:

Chairman: Gert Schultz 235-5068

Co-Chairman: Gordy Lund 231-2282

Co-Chairman: Marilyn McCormick 233-0222

Nominating Committee

Chair: Open position

Publicity: Sherry Bellin 303-1462, Linda Verwiel 231-4213

*Contacts newspaper on upcoming events

Reservations: Karen Rees 235-2844

*Receives reservations/money for Quarterly Meetings

Scholarship Selection

Scholarship Co-Chair: Nancy Crha 233-4016

Scholarship Co-Chair: Jaye Roeming 233-5712

Style Show: Joyce Pollnow 688-2661

*Organizes the annual fall style show

Style Show Co-Chair: Mary Berger 233-1411

Style Show Budget: Gordy Lund 231-2282

*Prepares and maintains fund-raiser budget

Sunshine: Gert Schultz 235-5068

*Gathers information regarding members and gives report to the board for the newsletter

Sweet Sensations

Co-Chairs: Cindy Knaggs & Mary Berger

*Organizes the annual fundraiser/sweet tasting event.

Waterfest: Linda Rhode 231-9463

*Schedules date(s) with Waterfest Committee and

Organizes sign up for volunteers at front gate and parking lot.

FUTURE BOARD MEETINGS:

JANUARY 10: Benvenutos

If you are a board member or committee member and cannot attend one of these meetings, please contact Joyce Pollnow at 688-2661.

HAPPY BIRTHDAY!

January: Jaye Roeming, Charlotte Lee, Cindy Kowalik, Joey McKay Neumann, Ellie Angle, Pat Saft, Linda Werner, Lisa Stiebs, Ardyce Kolterjahn, and Ruth Vorpahl.

SUNSHINE

Sympathy to Ann Jungwirth and her family in the passing of her brother in law.

If you know of any member who needs a cheerful card at a difficult.... or happy time, please contact Gert Schultz at 235-5068.

ADOPT-A-FAMILY

The Women's Division committee had a family of three: two boys ages 9 and 6 and a little girl age 5. Their wish list contained clothes and bedding; one boy likes Spongebob the other boy likes Spiderman; the girl likes anything princess. They received pajamas and a sheet set (in their theme), jeans and shirts, fleeces, sleeping bags, games, books, and several toys. The family gift contained a Christmas stocking filled with chocolate Santa's, M & M's, and candy canes, and a WalMart gift card, a velour blanket, a tool set and a pancake maker.

This year, 162 families received gifts for their children; almost 5000 children have received gifts over the years from this program. Santa's helpers, Gloria and Mary want to say THANK YOU members of the Women's Division for your generous contributions! We couldn't have done it without your support!



Appearances : Miss Oshkosh , Kelsey McDaniels

January 10....Oshkosh Elks Club, speaking and entertaining

**January 30....Fund raiser for Emmeline Cook School at Culver's on Koeller , 6-7 p.m.
Please stop and see Kelsey, along with Miss Fox Cities, Desiree Geffers. If you would like to have Kelsey appear at one of your events, please contact Gert (235-5068), Gordy (231-2282), or Marilyn (233-0222).**

2012 Miss Oshkosh Pageant:

The following 12 young ladies will compete in the 2012 Pageant: Jenna Kienbaum, Maggie Hill, Samantha Phillip, Tia DeHaan, Chelsee Felker, Amanda Hughes, Katherine Bohn, McKenzie Lund, Chelsey VanHulle, Janell Riesner, Emmy Marvin, and Emily McAleavey. The theme of this year's production will be: "Miss Oshkosh National Road Trip". Tickets will be available from Sally Lund at the January Quarterly meeting.

MISSION STATEMENT:

The Women's Division of Oshkosh Area, Inc., is committed to supporting our community, charities and citizens.

**WOMEN'S DIVISION OF
OSHKOSH AREA, INC.
P.O. BOX 3401
OSHKOSH, WI 54903-3401**